

24 Hours of Spa-Francorchamps July 23–26, 2015



Audi Sport

Event schedule

Thursday, July 23

12:00–13:30 Free Practice
17:40–18:40 Pre-Qualifying
20:00–21:15 Qualifying
21:45–23:45 Night Qualifying

Friday, July 24

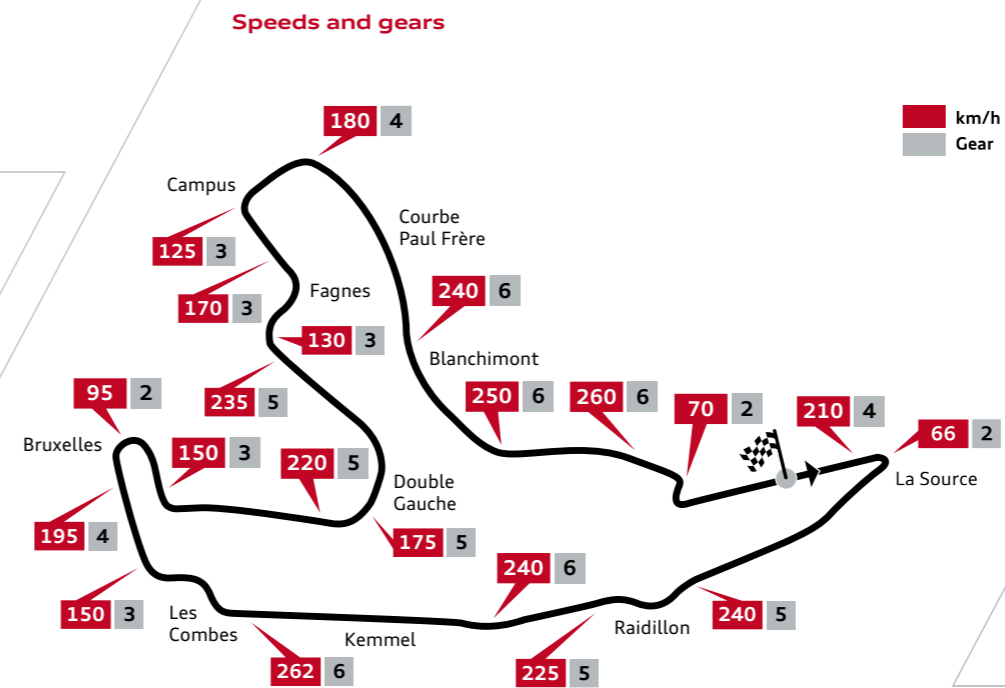
13:30–14:30 Meet the Team, Team Hospitality
16:10–16:35 Super Pole

Saturday, July 25

09:00–09:20 Warm-up
13:50–14:50 Pitwalk & team presentation
16:30 Start

Sunday, July 26

16:30 Finish
16:40–17:00 Podium
17:10–17:30 Press conference



MediaInfo 2015 24 Hours Spa-Francorchamps



Audi victories at Spa-Francorchamps

Overall victories

2011 Mattias Ekström/Greg Franchi/Timo Scheider (S/B/D)
2012 Andrea Piccini/René Rast/Frank Stippler (I/D/D)
2014 René Rast/Laurens Vanthoor/Markus Winkelhock (D/B/D)

Class victories

2009 (G2) Marc Basseng/Marcel Fässler/Alex Margaritis/Henri Moser (D/CH/GR/CH)

Track information

Spa-Francorchamps has preserved its classic character as a genuine driver's track. The compression in the Raidillon section at the end of the old pit lane is one of the world's most famous corners. The subsequent uphill section is followed by a long straight, which provides the best overtaking opportunities.
GT3 track record in qualifying: Laurens Vanthoor (Audi), 2m 18.710s in 2014
GT3 track record in the race: Maxime Martin (BMW), 2m 19.758s in 2012
Winners 2014: René Rast/Laurens Vanthoor/Markus Winkelhock (Audi)

Technical data Audi R8 LMS

Vehicle

Vehicle type Sports car complying with FIA GT3 regulations
Chassis Audi Space Frame (ASF) in aluminum-CFRP hybrid construction with stressed steel roll-cage, bodywork parts from CFRP and aluminum

Safety concept Energy absorbing aluminum and CFRP crash structures front and rear. Safety concept fulfils FIA LMP1 crash requirements. Audi Sport PS 1 safety seat

Engine

Engine type 90 degree V10 engine, 4 valves per cylinder, DOHC, gasoline direct injection, emission control by two exhaust gas race catalytic converters
Engine management Bosch Motorsport Motronic MS6.4
Engine lubrication Dry sump
Cubic capacity 5,200 cc
Power output Variable by restrictor up to 430 kW (585 hp)
Torque Over 550 Nm

Drivetrain/transmission

Drive system Rear wheel drive, traction control (ASR)
Clutch Electro hydraulically activated 3-plate race clutch (ECA)
Gearbox Sequential, pneumatically activated 6-speed racing gearbox with paddle shift

Differential

Limited-slip rear differential, variable preload

Driveshafts Constant velocity joints

Suspension/steering/brakes

Suspension Front and rear independent suspension. Double wishbones, damper struts with coil springs and adjustable dampers, as well as adjustable front and rear anti-roll bars
Steering Servo assisted rack and pinion steering

Brakes Hydraulic dual circuit brake system, steel brake discs front and rear, race ABS

Wheels Forged aluminum wheels, front 12.5 x 18 inch, rear 13 x 18 inch
Tires Front 30-68/18, rear 31-71/18

Dimensions/weight

Length/width/height 4,583/1,997/1,171 mm
Homologation weight 1,225 kg
Fuel tank capacity 120 l

Equipment

Fire extinguisher system Audi Sport
Controls Height and length adjustable safety steering column, quick adjust rail mounted pedal box

Seat system

Audi Protection Seat PS 1

AUDI AG

Communications Motorsport
D-85045 Ingolstadt

Phone +49 841 8934200
E-mail motorsport-media@audi.de

Media contacts

Jürgen Pippig
Head of Audi Communications Motorsport
+49 160 90430634
juergen.pippig@audi.de

Virginia Brusch
Communications customer racing
+49 151 52817968
virginia.brusch@audi.de

www.audi-mediacycenter.com

Social media

Facebook
facebook.com/AudiSport

Twitter
twitter.com/Audi_Sport

Instagram
instagram.com/audi_sport

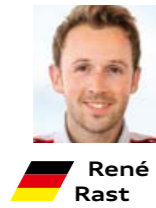
Audi Sport customer racing partners



Audi driver line-ups

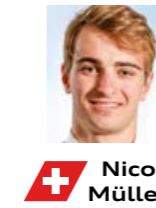
#1

Audi Sport Team WRT
Audi R8 LMS



#2

Audi Sport Team WRT
Audi R8 LMS



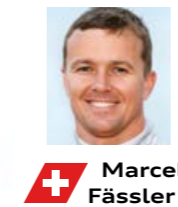
#5

Audi Sport Team Phoenix
Audi R8 LMS



#6

Audi Sport Team Phoenix
Audi R8 LMS



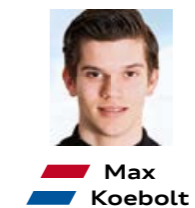
#3

Belgian Audi Club Team WRT
Audi R8 LMS ultra



#4

Team WRT
Audi R8 LMS ultra



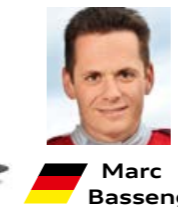
#24

Team Parker Racing
Audi R8 LMS ultra



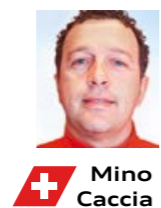
#35

Saintéloc
Audi R8 LMS ultra



#36

Saintéloc
Audi R8 LMS ultra



#75

ISR
Audi R8 LMS ultra

